

热流传感器

Heat Flux Sensor

BZ-028系列

本系列传感器是圆箔型组合式热流传感器，敏感元件为涂黑的康铜箔片。入射的热流被圆箔吸收并沿箔径向流向铜体，从而在圆箔中心与圆箔边缘建立起与入射流成正比的温度差。产生的热电势与温度差成比例。产品结构简单，使用方便。

性能指标

量程：CEDK-028系列：42、100、125、170、200、250 W/cm²

CR4-4-1/5系列：15、20、60W/cm²

精度：≤6% (CZ4-2-1/6)；≤4% (CZ4-4-1, 2)；≤5% (CZ4-4-3)

经受环境条件

加速度：63 ± 3g

运输：2~5.5Hz, 12.7mm; 5.5~200Hz, 2g

外型尺寸：CR4-2-1/6系列：L=37mm, Φ2=37mm

CR4-4-1/5系列：L=30mm, Φ2=30mm

安装尺寸：CR4-2-1/6系列：Φ1=40 ± 0.1, 6孔M3 (均布)

CR4-4-1/5系列：Φ1=42 ± 0.1, 6孔M3 (均布)

插座：Y8C-4ZJL

其他

安装方式 胶粘贴 (或螺钉)、法兰、球头或螺纹

特殊要求按用户要求定制

This series of sensors is round foil type combined heat flux sensor, sensitive element is blackening copper foil. Incidence heat flow is absorbed by circular foil and along the radial flow to the copper foil, the temperature difference is formed between circle foil center and circle foil edge in direct proportion. The thermal electromotive force is proportional to the temperature difference. The structure is simple and it is easy to operate.

Performance Index

Range: CR4-2-1/6: 42, 100, 125, 170, 200, 250 W/cm²

CR4-4-1/5: 15, 20, 60W/cm²

Accuracy: ≤6% (CZ-037-2-1/6)；≤4% (CZ-037-4-1, 2)；≤5% (CZ-037-4-3)

Environment condition

Accelerated speed: 63 ± 3g

Transportation: 2~5.5Hz, 12.7mm; 5.5~200Hz, 2g

dimension: CR4-2-1/6: L=37mm, Φ2=37mm

CR4-4-1/5: L=30mm, Φ2=30mm

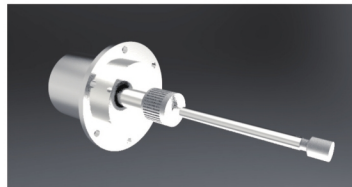
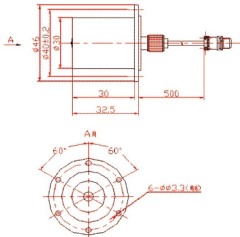
installation size: CR4-2-1/6: Φ1=40 ± 0.1, 6 holes M3 (uniform distribution)

CR4-4-1/5: Φ1=42 ± 0.1, 6 holes M3 (uniform distribution)

socket: Y8C-4ZJL

other

Mounting: adhesive stick (or screw), flange, ball head, or thread or customerized



外形尺寸和安装尺寸
Dimensions and mounting dimensions

接点分配：
Point distribution

	1	2	3	4
CR4-2-1/4, -6A	输出+ output+	输出+ output+	输出- output-	输出- output-
CR4-2-5, CR4-4-1/4	输出+ output+	输出- output-	屏蔽 shield	屏蔽 shield